



Waikīkī Beach Improvement Project

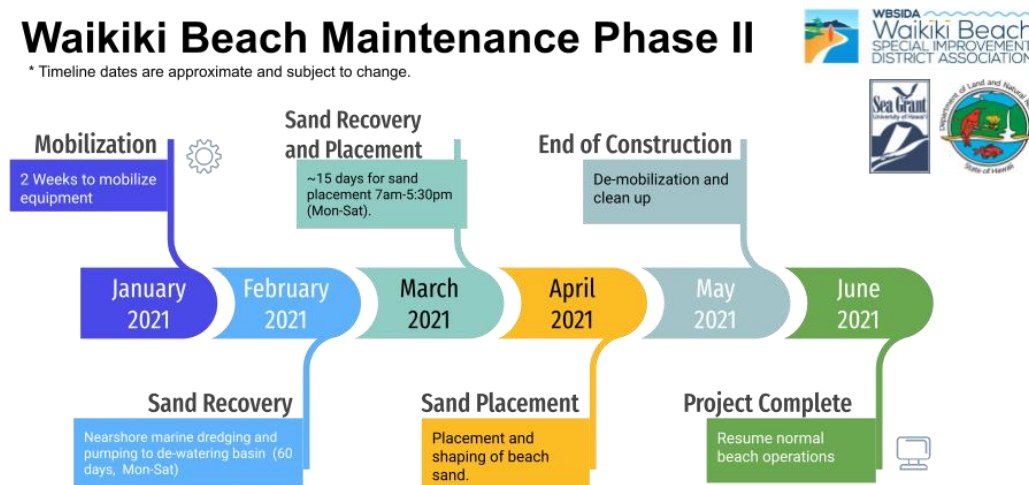
FREQUENTLY ASKED QUESTIONS

March, 2021

START DATE: Estimated late January, 2021.
DURATION: Approximately 4 months (January-April project window).
LOCATION: Kuhio Beach DH basin, Royal Hawaiian to Moana Surfrider Beach area.
<https://www.wbsida.org/waikiki-beach-maintenance>

Waikiki Beach Maintenance Phase II

* Timeline dates are approximate and subject to change.



<https://www.wbsida.org/waikiki-beach-maintenance>

Slidesgo and Freepik

1. **WHAT IS THE START DATE? WHEN WILL MOBILIZATION START?**
 - Earliest start date is late January, 2021 with about 2 weeks for the equipment mobilization.
2. **HOW LONG WILL THE PROJECT TAKE AND WHAT ARE THE WORK HOURS?**
 - See project timeline above. Estimated 3-4 month project window working 5-7 days/week
 - Sand pumping and de-watering 7am to 5pm (Mon-Sat).
 - Sand hauling and placement 7am to 5pm (Mon-Sat).
3. **WHAT ARE THE SCHEDULED TIMES, FREQUENCY AND DURATION FOR BEACH CLOSURES ALONG THE TRUCK HAUL ROUTE?**
 - The sand placement (March-April) will require temporary and partial closure of the beach in the immediate haul route area.
 - The haul route is along the beach between Kuhio Beach-Diamond Head basin and the Royal Hawaiian Groin.
 - Sand hauling and placement 7am to 5:30pm (Mon-Sat) and may extend longer hours on poor weather (rainy) days.
 - The contractor will have an observer to warn people in addition to temporary fencing or similar access control.





4. WILL THIS PROJECT AFFECT THE SURF SITES NEARBY?

- This is a critical environmental consideration for the design of the project. Extensive research and engineering design have been conducted to ensure there is negligible impact to the local surf sites.
- The surf sites in the immediate area; (*Queens, Canoes, Royals, Baby Queens, Baby Canoes and Baby Royals*) are all within the project boundaries.
- No significant impact to these sites is expected due to the extraction of the sand offshore since the waves approach and “feel” the bottom contours of the reef which lies several feet above the sand bottom. Changes to offshore depths are temporary.
- Slight and temporary bottom depth changes may occur to the immediate nearshore in the sand placement area (Royal Hawaiian beach cell), with more sand in the nearshore areas closest to the beach. This may make the furthest inside breaks more shallow in some locations.



5. HOW WILL THIS PROJECT AFFECT WATER QUALITY IN THE AREA?

- The project is expected to result in a temporary decrease in water visibility in the sand placement areas due to the suspension of sand and naturally occurring fine marine carbonate silt. There are no immediate health concerns associated with this material.
- The project includes an extensive program for marine water quality testing (daily) during the project and marine benthic and coral assessment for 1 year following.

6. WILL THE DREDGED SAND EMIT AN ODOR? WHAT CAN BE DONE TO MITIGATE COLOR/ODOR?

- The dredging of marine sand typically results in a gray color and slightly sulfuric (egg-like) smell due to the anoxic conditions below the surface of the sand. This naturally-occurring process is normal and expected, the gray color and smell greatly decreases over the course of a couple of days with exposure to the air and ultra-violet sunlight.
- The industry standard Best Management Practice worldwide for this is to let the sand air out and dry naturally.

7. WILL THE DREDGED SAND BE SCREENED TO ASSURE THAT ONLY SAND IS BEING PLACED?

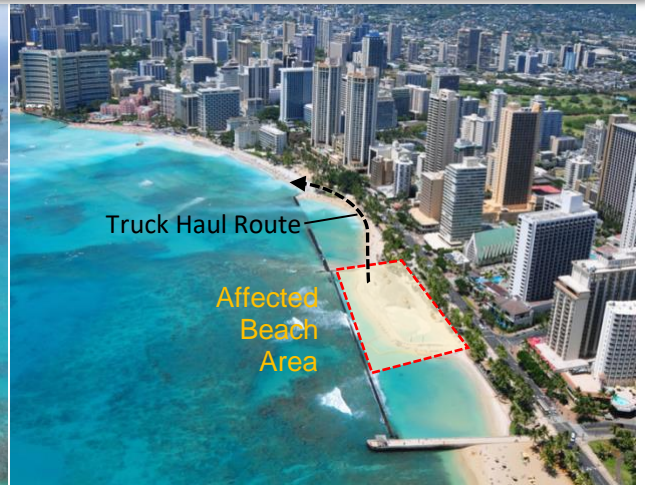
- Yes. The contractor is required to screen and remove all material larger than 1 inch diameter before placement on the beach.



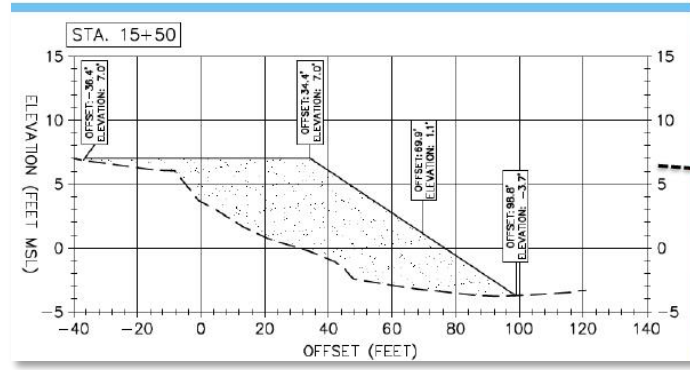
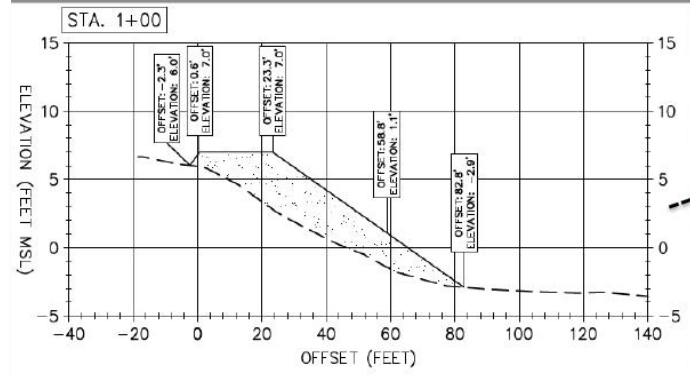
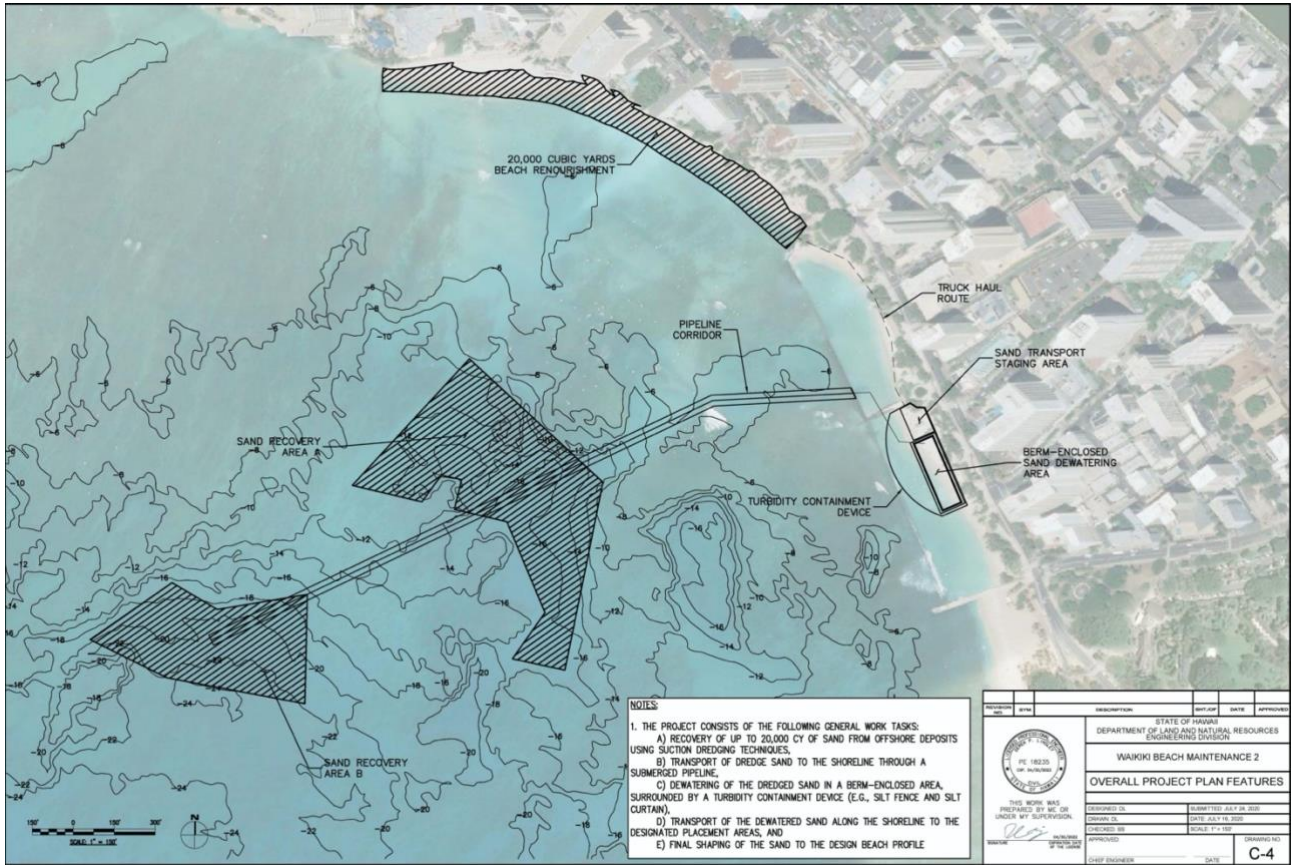
8. THE 2012 PROJECT RESULTED IN A HARD BERM ON THE BEACH, WHAT IS BEING DONE TO ADDRESS THIS?

- The temporary hardened berm that resulted soon after the 2012 sand placement was a result of sand compaction along the haul route from the heavy dump trucks. Monitoring of the beach is being carried out and if similar conditions form, beach grooming will be carried out to till and turn over the compacted sand. This natural compaction process is common and tilling is conducted on a regular basis in other nourished beaches such as Miami Beach.





Project details, reports and progress updates can be found at:
<https://www.wbsida.org/waikiki-beach-maintenance>





Sand Placement Schedule

Waikiki Beach Maintenance Project

<https://www.wbsida.org/waikiki-beach-maintenance>

