

# Waikīkī Beach Maintenance Project

<https://www.wbsida.org/waikiki-beach-maintenance>

## Project Schedule

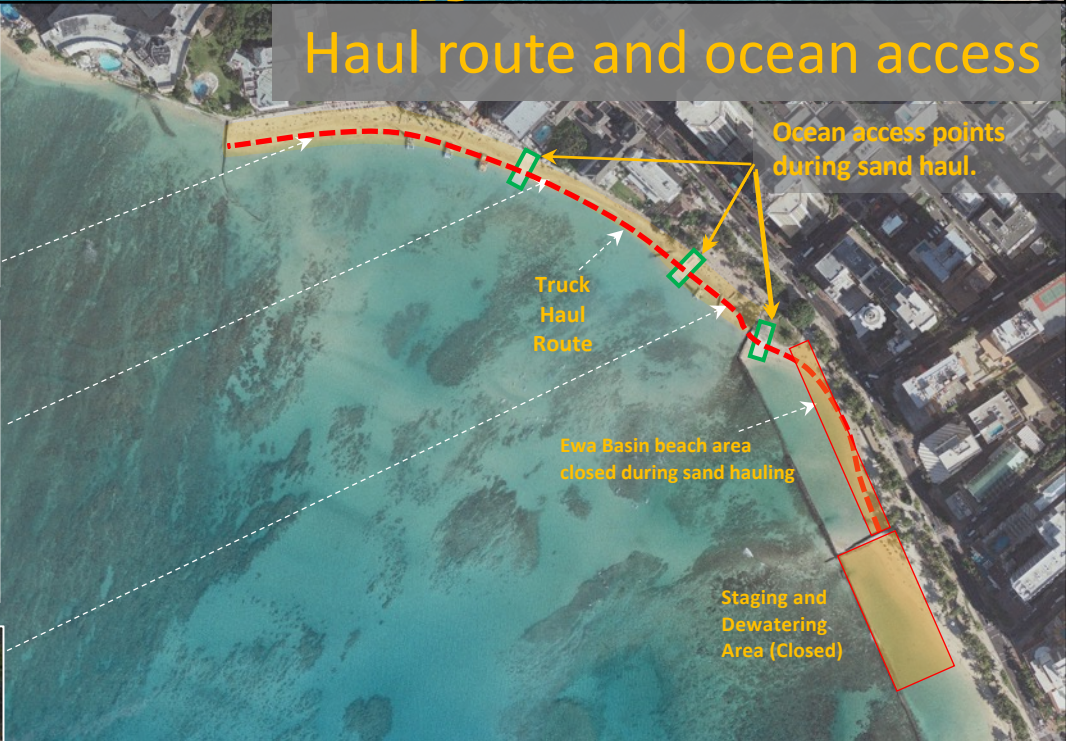
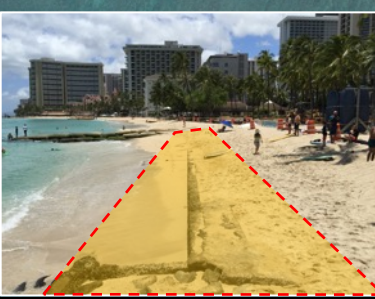
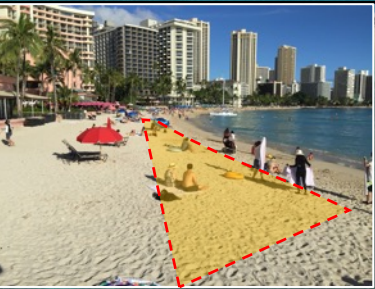
(Subject to change)

### Waikīkī Beach Sand Placement

- 2-3 weeks for sand placement
- Add ~25-50 feet of beach width
- Sand placement (Subject to change)
  - **Late April**
  - (Mon-Sat 6am-6pm)



## Haul route and ocean access



### Sand Haul Route

- ~20 ft wide dedicated corridor on the seaward side of beach.
- Three dedicated ocean access points.
- (Mon-Sat 6am-6pm)